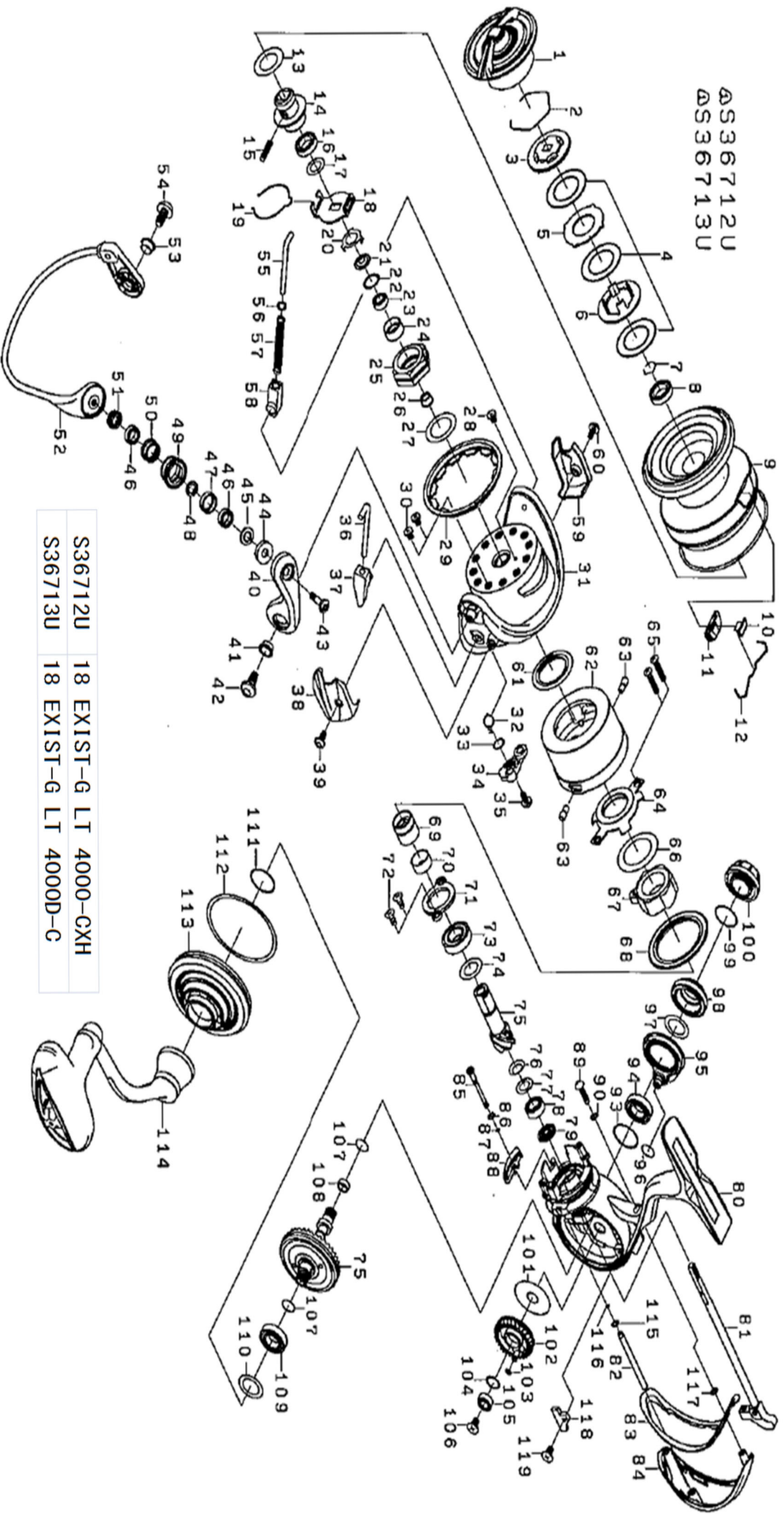




Please quote by part number, not key number when ordering
 spares@daiwaaustralia.com.au PH: 02 8644 8644
2018 EXIST LT 4000-CXH

AS36712U
 AS36713U



S36712U	18 EXIST-G LT 4000-CXH
S36713U	18 EXIST-G LT 4000D-C



Please quote by part number, not key number when ordering
 spares@daiwaaustralia.com.au PH: 02 8644 8644
2018 EXIST LT 4000-CXH

Key No.	Part Number	Description	Key No.	Part Number	Description	Key No.	Part Number	Description
1	6J573401	DRAG KNOB	40	6J519701	ARM LEVER	79	6J552001	PINION BEARING COLLAR
2	6J556701	DRAG RING	41	6J254901	ARM LEVER SCREW COLLAR	80	6J570107	BODY ASSY
3	6J556601	DRAG RATCHET	42	6J255001	ARM LEVER SCREW	81	6J570601	MAIN SHAFT
4	6J679101	ATD DRAG WASHER(1pac-3pcs)	43	6J257001	ROLLER SCREW	82	6J553102	OSCILLATING POST
5	6J561201	DRAG LIP WASHER	44	6J538001	ROLLER MAG COLLAR	83	6J571601	REAR CAP PACKING
6	6J556501	DRAG DISC WASHER	45	6J538401	ROLLER MAGNET ASSY(A)	84	6J571701	REAR CAP
7	6B358702	BEARING RETAINER	46	6J256702	ROLLER BALL BEARING	85	6J609105	BAIL KICK COLLAR SCREW
8	6G212503	SPOOL BALL BEARING	47	6J256601	ROLLER COLLAR (A)	86	6J718501	BAIL KICK COLLAR WASHER
9	6J737201	SPOOL ASSY (2-12)	48	6J256301	ROLLER COLLAR (B)	87	6J718601	BAIL KICK COLLAR O-RING
10	6J558001	LINE STOPPER	49	6J256502	LINE ROLLER	88	6J571801	BAIL KICK COLLAR
11	6J568601	LINE STOPPER PLATE	50	6J256401	ROLLER COLLAR (C)	89	6J553601	REAR CAP SCREW
12	6J314801	LINE STOPPER SPRING	51	6J537801	ROLLER MAGNET ASSY(B)	90	6G315301	REAR CAP SCREW WASHER(A)
13	6J546300	SPOOL WASHER (A)	52	6J572301	BAIL ASSY	93	6J554101	DRIVE BEARING (B) WASHER
14	6J549501	SPOOL METAL	53	6J254901	BAIL HOLDER SCREW COLLAR	94	6J046802	DRIVE BALL BEARING (B)
15	6J558201	SPOOL METAL SCREW	54	6J255001	BAIL HOLDER SCREW	95	6J570301	SET PLATE
16	6G522705	SPOOL METAL BALL BEARING	55	6G298201	BAIL SPRING SHAFT	96	6J551301	SET PLATE O-RING
17	6J602201	SPOOL WASHER (B)	56	6G685401	BAIL SPRING SHAFT WASHER	97	6J555501	COVER WASHER
18	6J546201	CLICK HOLDER	57	6G944501	BAIL SPRING	98	6J571302	SIDE COVER (R)
19	6J525101	CLICK LEAF SPRING	58	6G471602	BAIL SPRING SHAFT HOLDER	99	6G399702	HANDLE CAP O-RING
20	6G471501	ROTOR NUT PLATE	59	6J572701	BAIL HOLDER COVER	100	6J555901	HANDLE CAP
21	6J729101	ROTOR NUT PACKING	60	6J255201	COVER SCREW	101	6J551401	OSCILLATING GEAR WASHER
22	63755202	ROTOR NUT BEARING WASHER	61	6J554901	ROTOR PACKING	102	6J570401	OSCILLATING GEAR
23	6H959602	ROTOR NUT BALL BEARING	62	6J554501	STOPPER CAP ASSY	103	6G869601	OSCILLATING GEAR O-RING
24	6J690201	ROTOR NUT COLLAR	63	6J554701	STOPPER CAP SCREW	104	6H129200	OSCILLATING GEAR WASHER
25	6J253001	ROTOR NUT	64	6J553801	MAGSEALED PLATE	105	6G686904	OSCILLATING GEAR BALL BEARING
26	6J555001	ROTOR NUT BEARING COLLAR	65	6H842805	MAGSEALED PLATE SCREW	106	6G940401	OSCILLATING GEAR SCREW
27	63712824	ROTOR NUT WASHER	66	6H502200	MAGSEALED PLATE WASHER	107	6J731701	DRIVE GEAR O-RING
28	6H022701	ROTOR NUT SCREW	67	6H412602	ONEWAY CLUCH	108	6J552701	DRIVE GEAR RING
29	6J284001	ROTOR COVER	68	6J553701	STOPPER CAP PACKING	109	6J030303	DRIVE BALL BEARING (A)
30	6H022701	ROTOR COVER SCREW	69	6J554801	CLUCH RING	110	6G613400	DRIVE BEARING WASHER
31	6J571901	ROTOR	70	6J536202	CLUCH RING COLLAR	111	6J556301	BODY COVER O-RING (A)
32	6J435201	KICK LEVER SPRING	71	6J552101	PINION BEARING PLATE	112	6J571501	BODY COVER O-RING (B)
33	6J339500	KICK LEVER WASHER	72	6J552201	PLATE SCREW	113	6J571405	BODY COVER (L)
34	6J572001	KICK LEVER ASSY	73	6G279602	PINION BALL BEARING (A)	114	6J573701	HANDLE ASSY
35	6H417701	KICK LEVER SCREW	74	63758500	PINION BEARING WASHER (A)	115	6G712401	OSCILLATING POST WASHER
36	6J262601	ARM LEVER SHAFT	75	6Z023697	PINION + DRIVE GEAR SET	116	6G688301	OSCILLATING POST O-RING
37	6J262701	ARM LEVER SHAFT HOLDER	76	6H814900	PINION SPRING WASHER	117	6G315301	REAR CAP SCREW WASHER (B)
38	6J572201	ARM LEVER SPRING COVER	77	6E096500	PINION BEARING WASHER (B)	118	6J724001	MAIN SHAFT RETAINER
39	6J255201	COVER SCREW	78	6G538007	PINION BALL BEARING (B)	119	6G940406	MAIN SHAFT RETAINER SCREW